

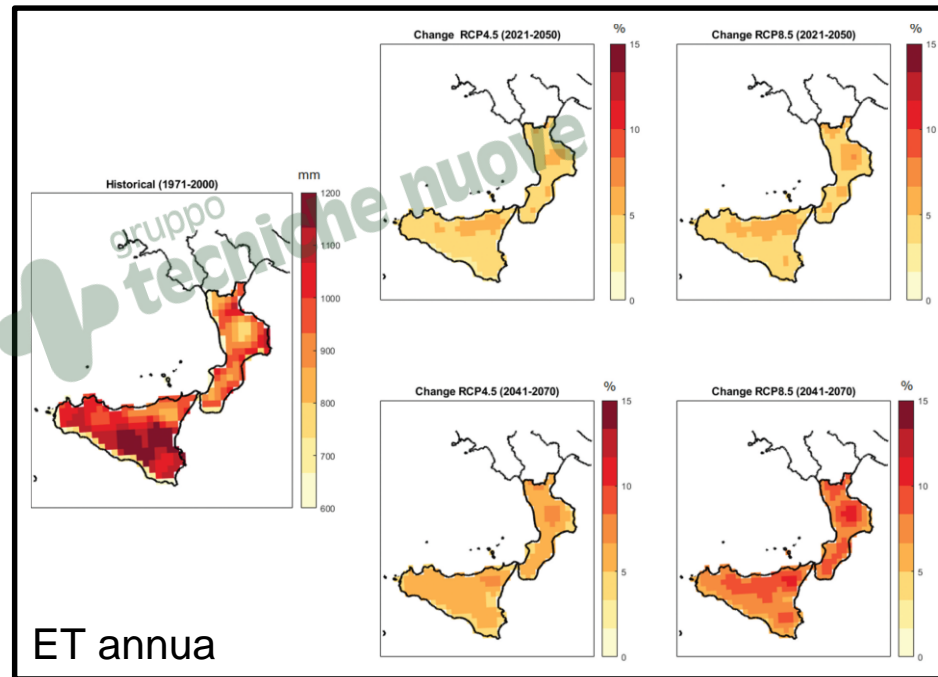
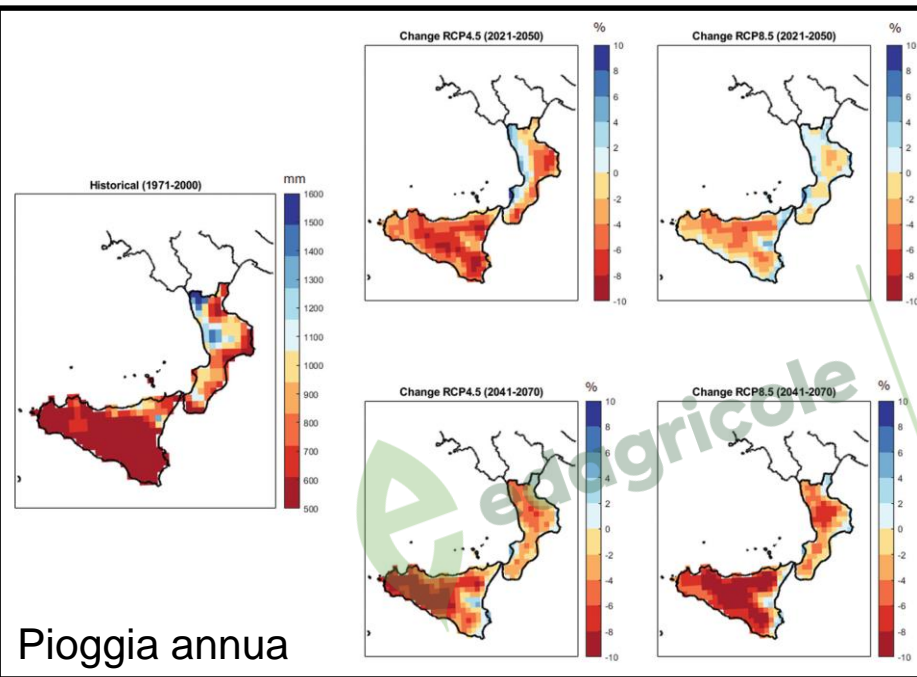
# SUPPORTO DECISIONALE. Stazioni agrometeorologiche e DSS per una gestione mirata del frutteto

**Alfonso Senatore** *Università della Calabria, Dipartimento di Ingegneria dell'Ambiente*

- CAMBIAMENTO CLIMATICO PREVISTO
- PREVISIONI METEOROLOGICHE A BREVE TERMINE
- TECH4YOU – ECOSISTEMA DELL'INNOVAZIONE (PNRR)
- STRUMENTI PER LA MISURA DIRETTA DELLE EMISSIONI DI CO<sub>2</sub> IN ATMOSFERA

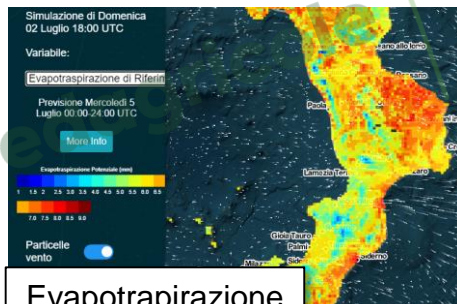
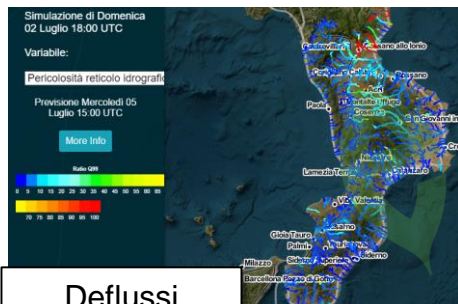
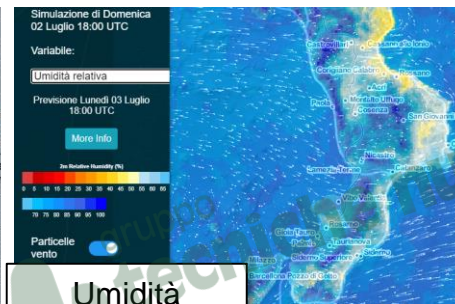
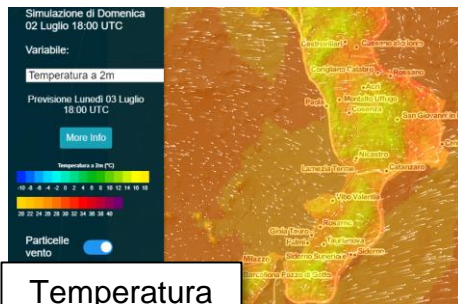
# CAMBIAMENTO CLIMATICO PREVISTO

Peres, ... & Senatore (2023): A dynamic approach for assessing climate change impacts on drought: an analysis in Southern Italy, Hydrological Sciences Journal  
DOI: 10.1080/02626667.2023.2217332



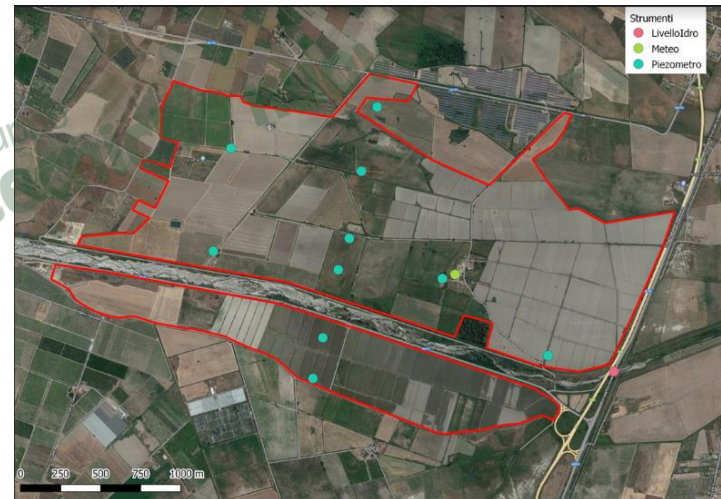
# PREVISIONI METEOROLOGICHE A BREVE TERMINE (FINO A 4 GIORNI)

<https://cesmma.unical.it/cwfv2/>



- Pioggia da radar
- Indici siccità meteo
- Indici siccità agricola
- ...

- ❑ **Azione 1:** Ground-based and remote sensing observational network integration
- ❑ **Azione 2:** Short-range forecast operational system
- ❑ **Azione 3:** Medium-long range forecast operational system
- ❑ **Azione 4:** System integration within a Decision Supporting System
  - ❑ Valutazione del danno materiale e del danno finanziario



# Strumenti per la misura diretta delle emissioni di CO<sub>2</sub> in atmosfera

## Misure in frutteto

